

Current Status, Challenges, and Initiatives in Visiting Nursing within Japan's Aging Society



Self-Introduction

Yuki Takata (Nurse • Public health nurse)



Carepro Visiting Nursing Station Tokyo |
Director, Adachi Area



**Tokyo Women's
Medical University
Hospital
(Nurse)**



**Employed at
Carepro Visiting
Nursing Station
Tokyo**

**Assumed current
position: Director**

**Field Staff
→ Leader
→ Deputy Manager**



The Current State of Visiting Nursing in Japan



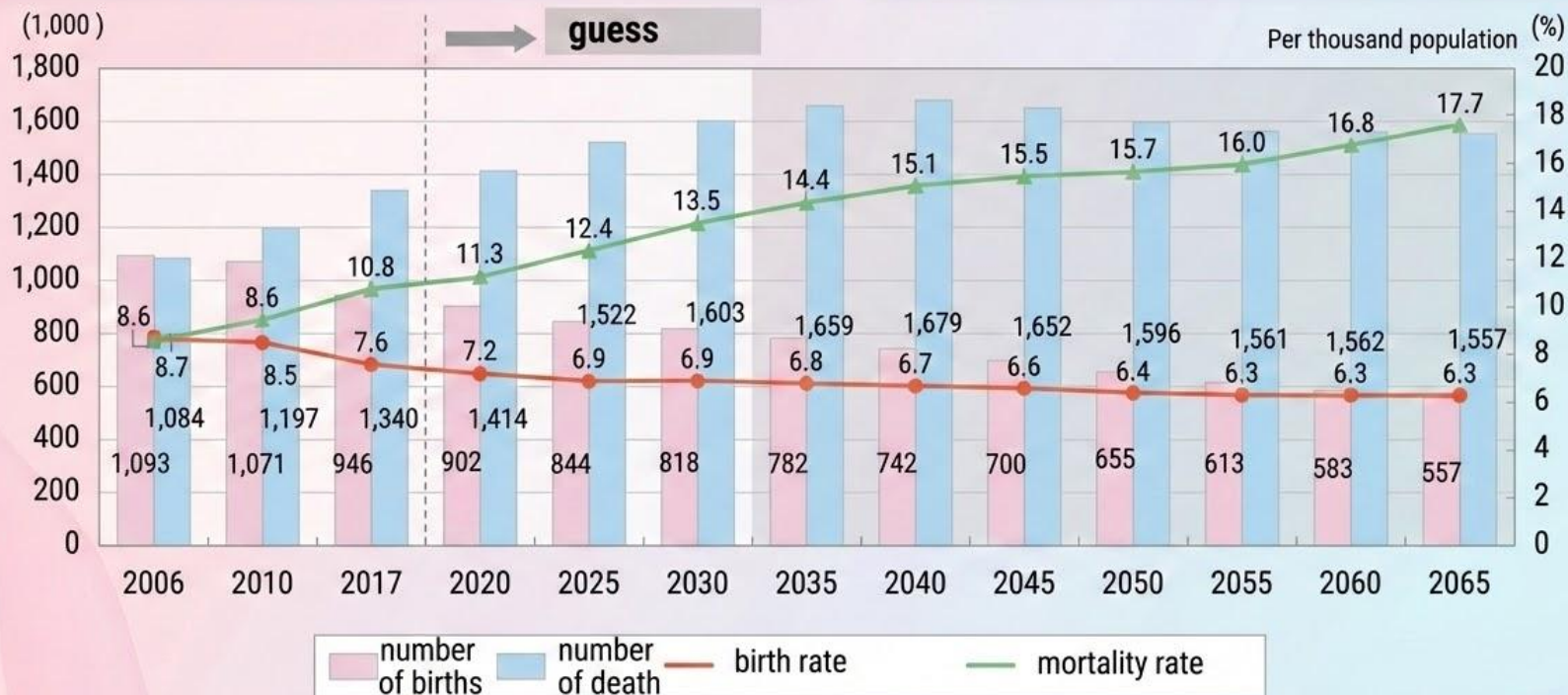
Aging Society with Declining Birthrate and Rising Healthcare Costs



**Resource: Increased demand x
Decreased supply system = Severe
shortage of personnel**



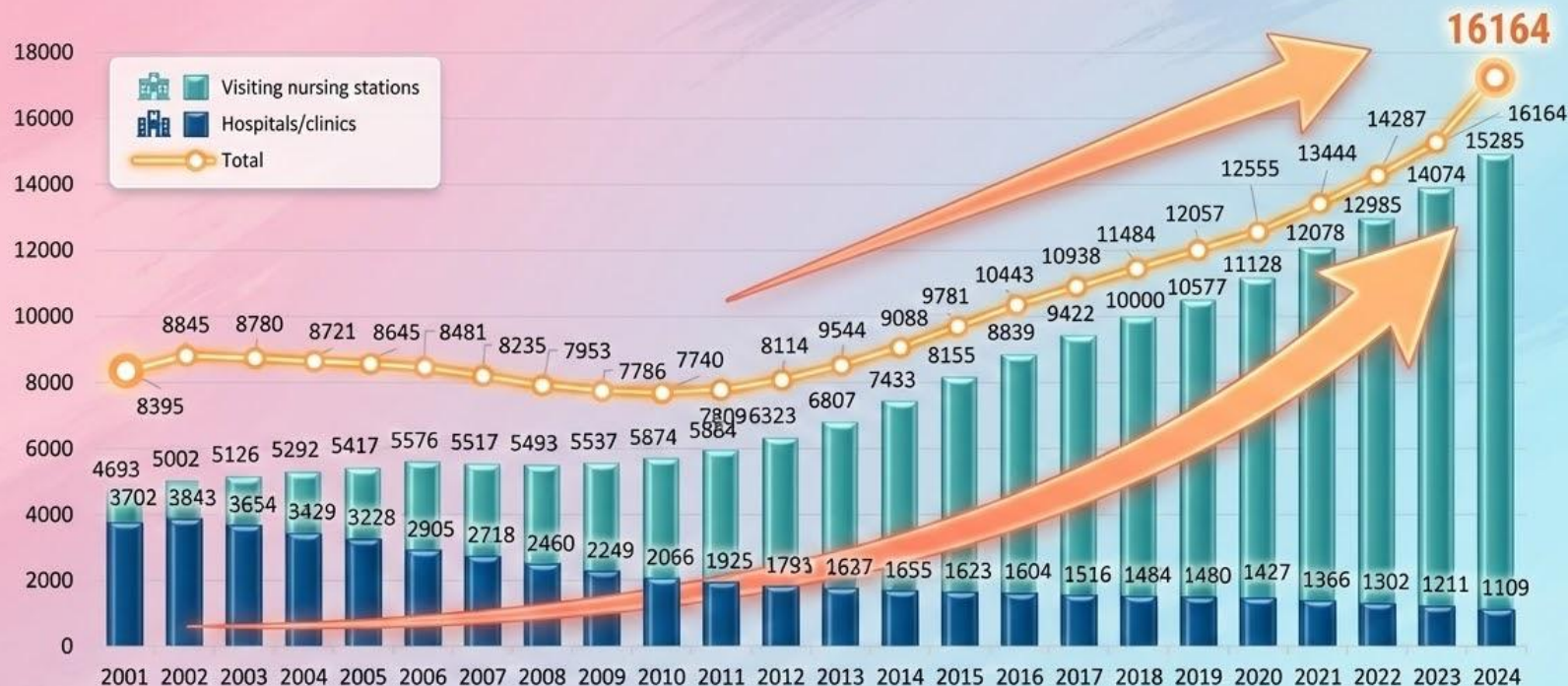
**Financial Situation: Increased
expenditure x Decreased revenue =
Increased economic burden**



The System Surrounding Visiting Nursing in Japan



Increase in the number of visiting nursing provider



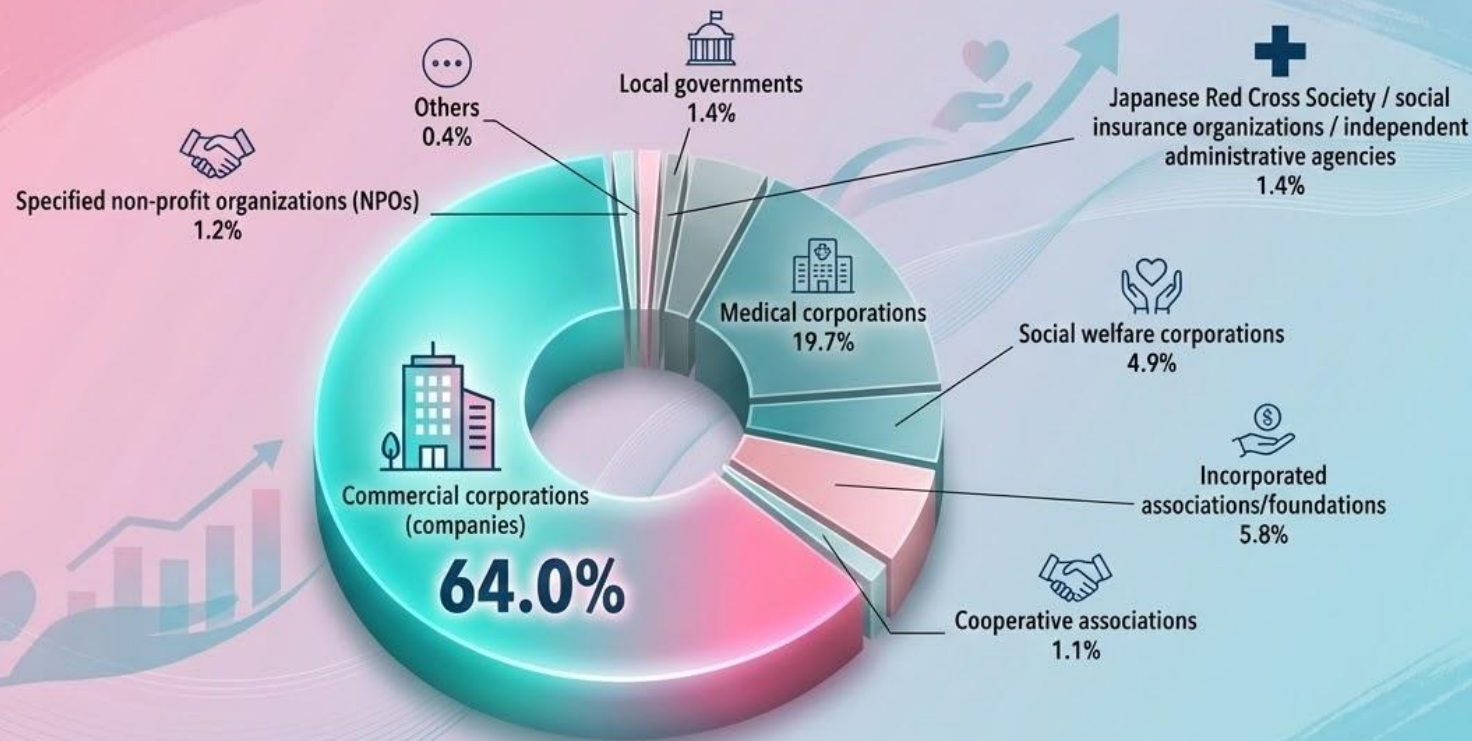
* The totals indicate the sums of figures in the graph.

* As of August 2024

Material: Prepared from the Ministry of Health, Labour and Welfare, "Statistics of Status Survey on Long-term Care Benefits (the number of visiting nursing offices with billing in September every year)"

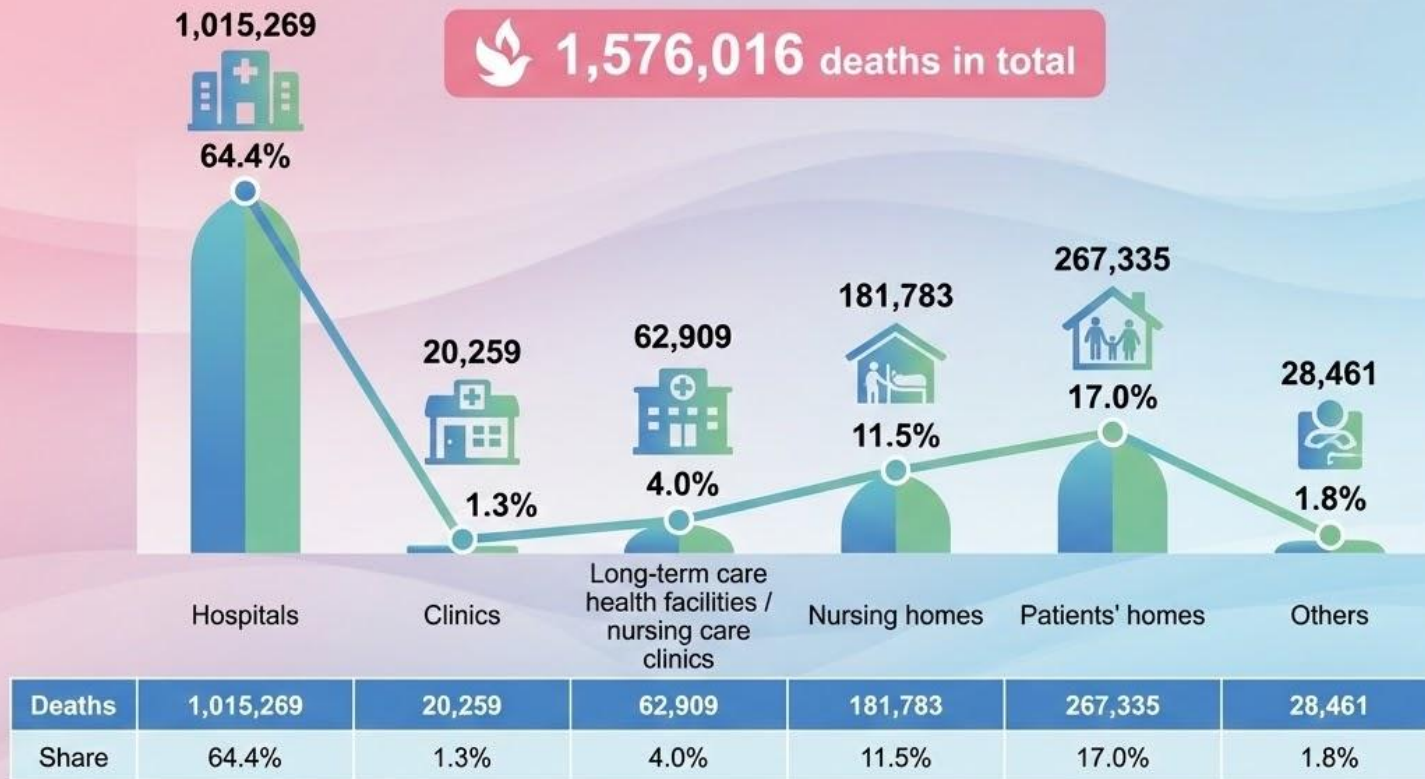
Japan Visiting Nursing Foundation

Shares by operators of visiting nursing stations



Material: Prepared from the Ministry of Health, Labour and Welfare "Long-term Care Service Facilities and Offices Survey 2023"

Deaths and composition by the place of death



Prepared from Table 5, the deaths and composition by the place of death, the Ministry of Health, Labour and Welfare "Vital Statistics (2023)"

Our users



Terminal phase



child with medical care



Users with neurological diseases



**Those requiring medical management
such as ventilators**



Orthopedic disease



Living alone with cancer

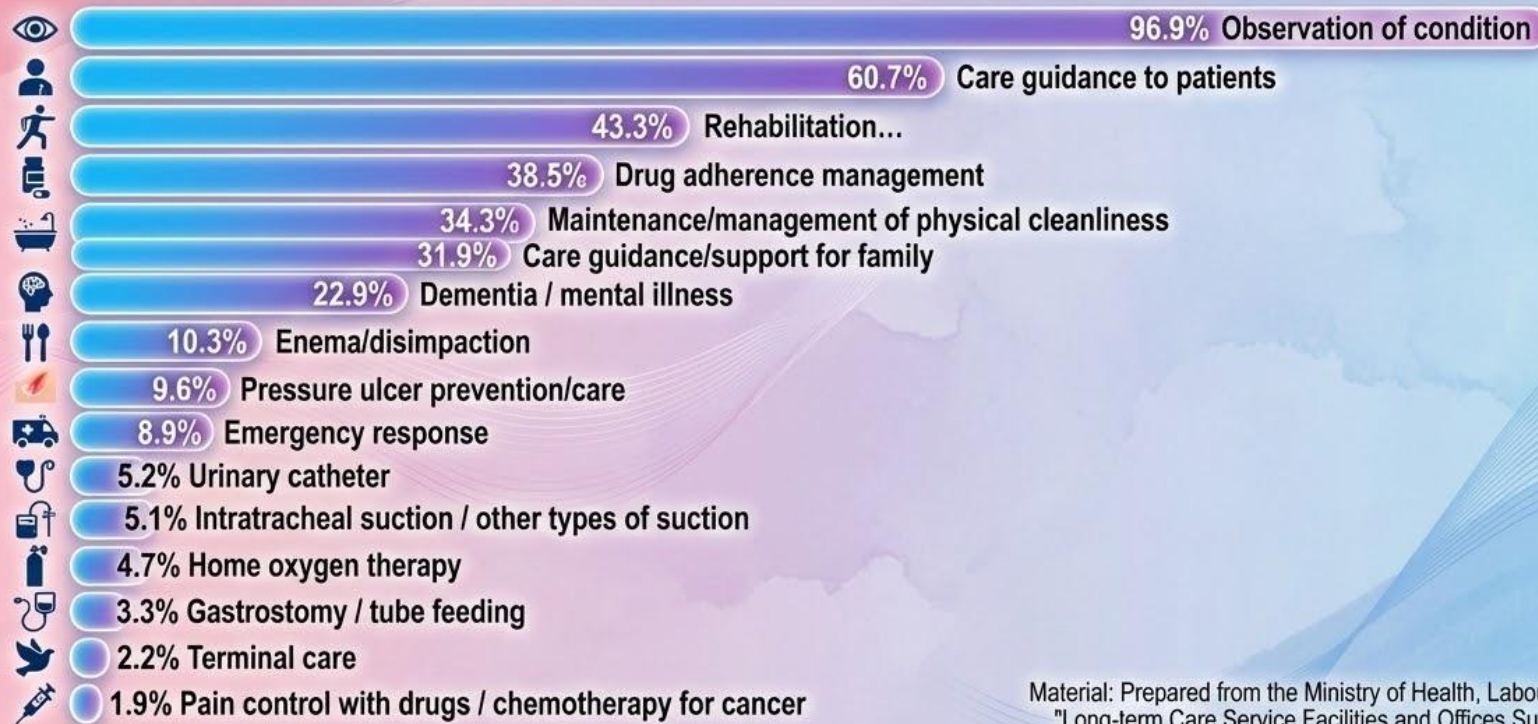
Home visit

Co-living Services

Senior Housing

Details of care for users of visiting nursing stations

* Users of visiting nursing stations: 1,115,634
(Nursing pertaining to medical procedures is performed on 61.5% of total)



Material: Prepared from the Ministry of Health, Labour and Welfare
"Long-term Care Service Facilities and Offices Survey 2022"
Japan Visiting Nursing Foundation

Features of Visiting Nursing Station



Average number of full-time nurses (nationwide):

5.5 nurses



Average number of users per station (nationwide):

72 users



Visits are within a
5 km radius
(our station)



Education System

Comprehensive support for continuous professional development

Foundational Learning & Support



Orientation when joining the Company



Morning meetings



Interviews



Self-learning support tool



Study meeting



Qualification acquisition system

Advanced Specialization & Expertise



Certified Nurse (visiting nursing)



Certified Nurse (wound nursing)



Certified Nurse Specialist (disaster nursing)



Actual patients in the field



Examples of Combining Family Care and Medical Services

Patient Profile

Male in his 50s.

Lives with wife and 4 children.

Medical History

2018: Diagnosed with ALS

2020: Tracheostomy due to aspiration pneumonia

Integrated Care Services



Home-visit
nursing



Home-visit
medical care











Home-visit
bathing services



Welfare equipment
rental services



Service delivery system

	Mo.	Tu.	We.	Th.	Fr.	Sa.	Su.
AM	 Nurse	 Home-visit bath	 Doctor's visit	 Nurse	 Ns+Rehab		
PM	 Rehab	 Rehab	 Rehab				



home-visit bath



check VS and ventilator ,do tracheo and PEG care ,etc



training riding wheelchair with nurse and PT

Living daily life while using a ventilator



using ventilator and
neuro-communication system



go camping with family



watch fire works


Examples of individuals living alone who utilize helper services




A detailed weekly schedule grid for a client, showing time slots from 6:00 to 24:00 across the days of the week. The grid is color-coded (green, blue, yellow, red) to represent different types of services or activities. Decorative icons like clocks, a calendar, and a first aid kit are placed around the grid.

	月	火	水	木	金	土	日
6:00							
6:30							
6:45							
7:00							
7:30							
8:00							
8:30							
9:00							
9:30							
10:00							
10:30							
11:00							
11:30							
12:00							
12:30							
13:00							
13:30							
14:00							
14:30							
15:00							
15:30							
16:00							
16:30							
17:00							
17:30							
18:00							
18:30							
19:00							
19:30							
20:00							
20:30							
21:00							
21:30							
22:00							
22:30							
23:00							
23:30							
24:00							

Examples of End-of-life care for individuals living alone



"I can't breathe, it's unbearable."



"Suddenly I was overwhelmed with anxiety and loneliness, couldn't breathe, and ended up calling everyone I know and getting yelled at. They suggested hospitalization, but even though I'm lonely, I love my home and want to stay here."

"This moment is bliss. Thank you,"



Future Trends and solutions in Japan



Challenges Encountered in Visiting Nursing

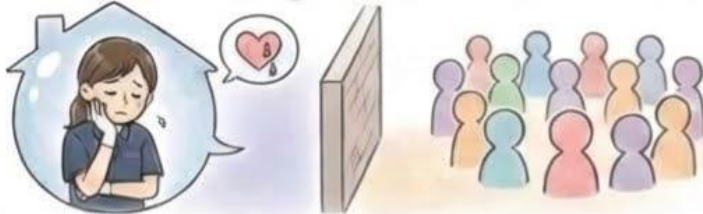
- The Reality of Having No Choice but to Consider Hospitalization or Facility Placement



- Lack of Reassuring Places for Individuals with High Medical Dependency



- Isolation of Caregivers



- Regional Challenges



Increase in Service-Providing Senior Housing



small-scale multifunctional in-home nursing care



Integration of Treatment and Daily Living Using small-scale multifunctional in-home nursing care



Home-visit nursing service (Sat./Sun.)



Home help services (Mon./Fri.)



Day care
(Mon.–Sat.)



Short stay
(Mon.–Thu.)

Promoting nursing through community events



Japan is experiencing a weakening of community bonds.
As a result, “coexistence” within communities has become a trend.

I want us to reconsider the importance of human connections and the value of having family.

